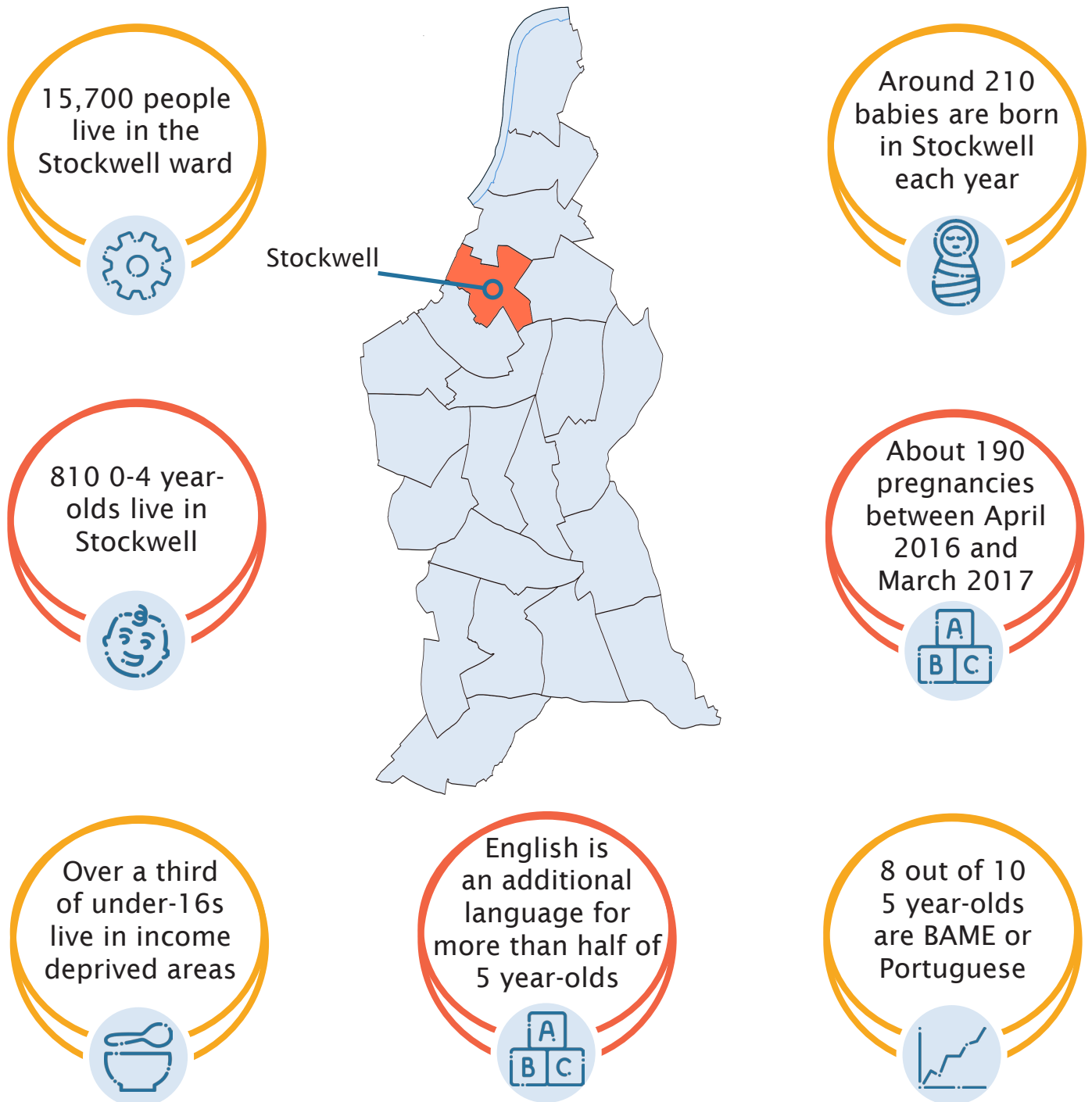


Early years at a glance

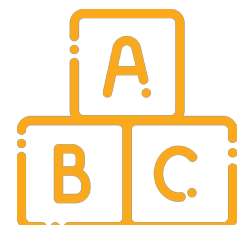
Stockwell



Stockwell's local population



Lambeth Early Action Partnership (LEAP) is an innovative programme to better the lives of thousands of children in the Lambeth community, focusing on the four wards of Stockwell, Coldharbour, Vassall and Tulse Hill.

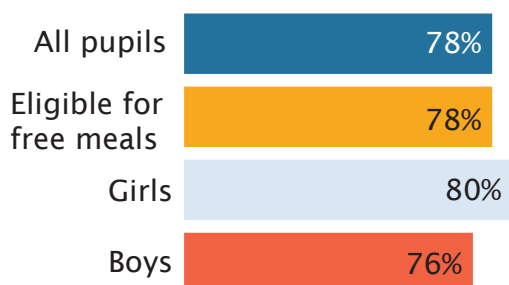


Early years at a glance

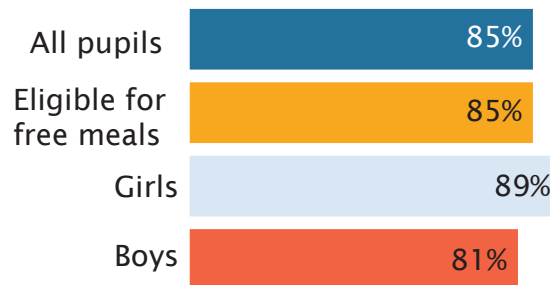
Stockwell



Outcomes for children in Stockwell



Good level of communication and language development age 5



Good level of social and emotional development age 5



1 in 4 children are overweight or obese at school entry



47% of 11 year-olds are overweight or obese

Lambeth Early Action Partnership (LEAP) is an innovative programme to better the lives of thousands of children in the Lambeth community, focusing on the four wards of Stockwell, Coldharbour, Vassall and Tulse Hill.

