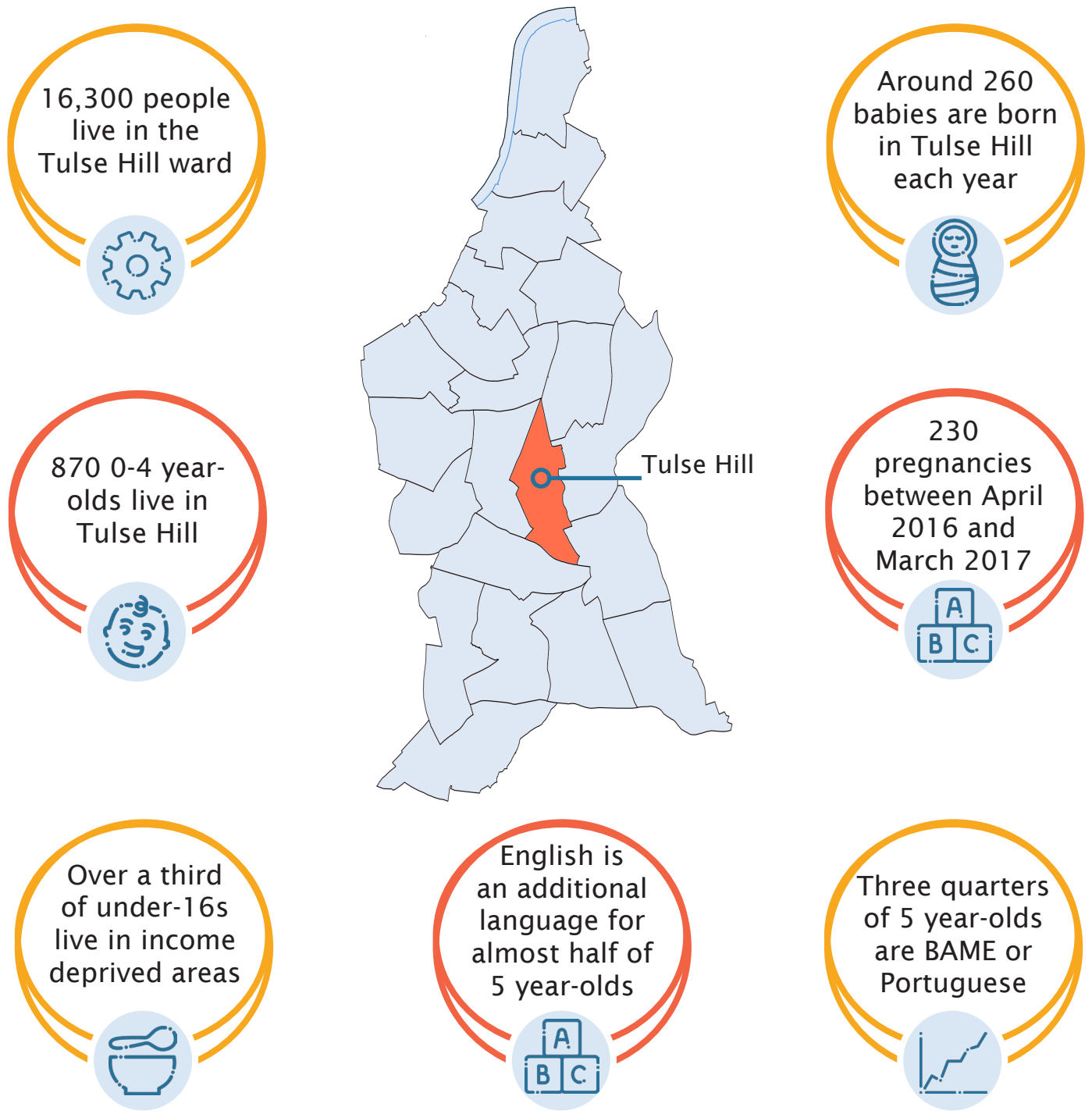


Early years at a glance

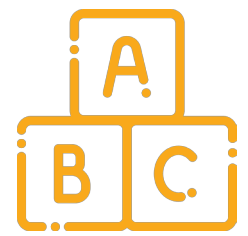
Tulse Hill



Tulse Hill's local population



Lambeth Early Action Partnership (LEAP) is an innovative programme to better the lives of thousands of children in the Lambeth community, focusing on the four wards of Stockwell, Coldharbour, Vassall and Tulse Hill.

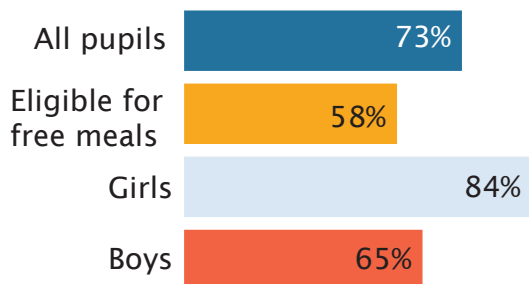


Early years at a glance

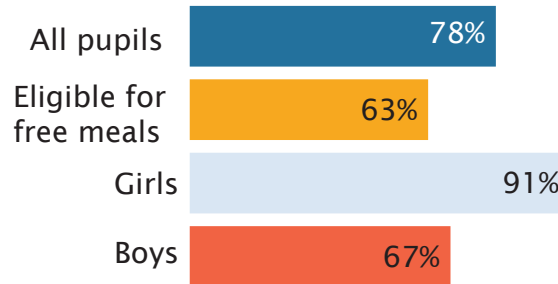
Tulse Hill



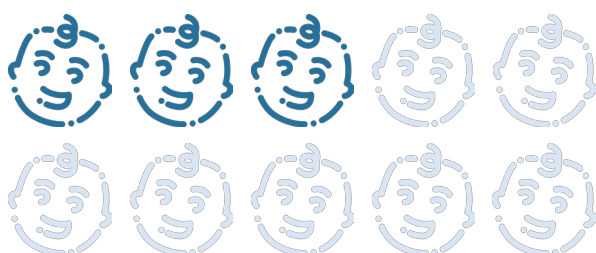
Outcomes for children in Tulse Hill



Good level of communication and language development age 5



Good level of social and emotional development age 5



3 in 10 children are overweight or obese at school entry



45% of 11 year-olds are overweight or obese

Lambeth Early Action Partnership (LEAP) is an innovative programme to better the lives of thousands of children in the Lambeth community, focusing on the four wards of Stockwell, Coldharbour, Vassall and Tulse Hill.

